



STEEL DRUM

Bitumen Drum

Designed for Hot Asphalt and Bitumen

Unique light-weight drum optimized for easy filling and low-cost upfront delivery.

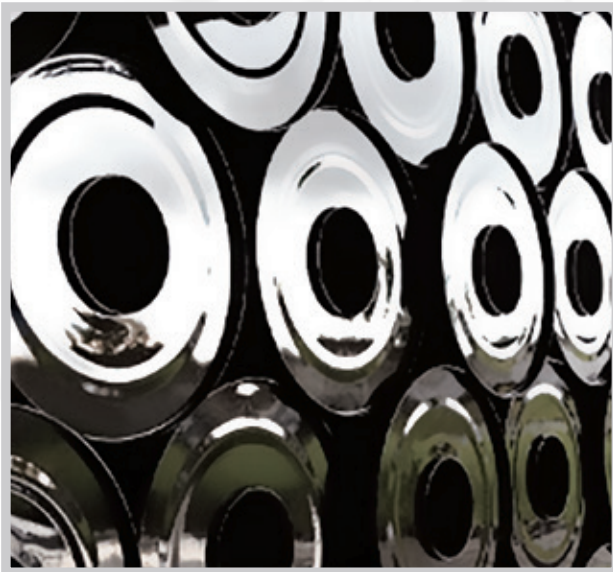
GREIF[®]

PACKAGING SUCCESS TOGETHER

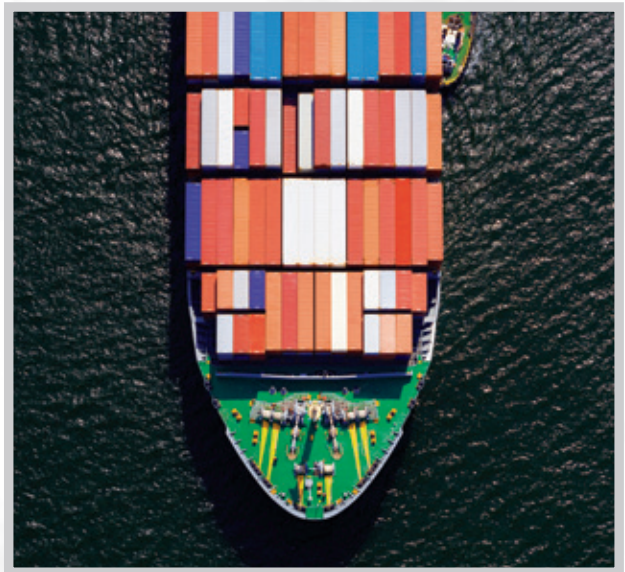
www.greif.com

Bitumen Drum Features

- ✓ Available in large (216 liter/55 gallon) and intermediate (115 liter/30 gallon and 60 liter/16 gallon) sizes.
- ✓ Wide opening on top for quick and easy filling and emptying.
- ✓ Light gauge steel and ISO dimensions for easy, low-cost upfront delivery and reduced CO₂ impact.



Designed with large top opening for safe and fast hot asphalt filling.



ISO dimensions for optimal transport in sea containers.

 For more information, talk to your local sales representative.

GREIF
PACKAGING SUCCESS TOGETHER

Data, dimensions, and information provided on this document are considered as nominal values for general purpose use in evaluating this product for customer's application. These are not considered as manufacturing specifications. WE HEREBY DISCLAIM AND EXCLUDE ANY EXPRESS OR IMPLIED WARRANTIES, INCLUDING WITHOUT LIMITATION THE IMPLIED WARRANTIES OF MERCHANTABILITY AND FITNESS FOR A PARTICULAR PURPOSE.

© 2018 Greif Inc. All rights reserved. Greif is a registered trademark.